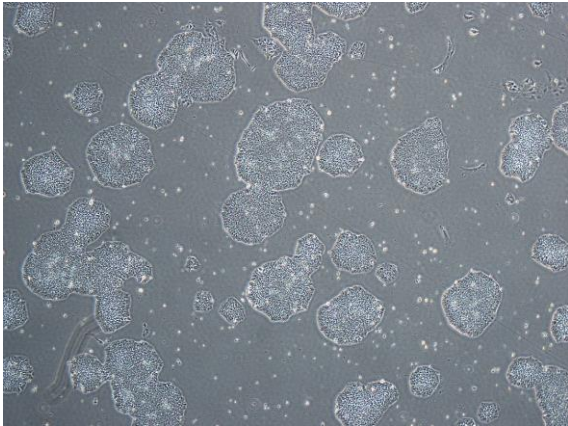
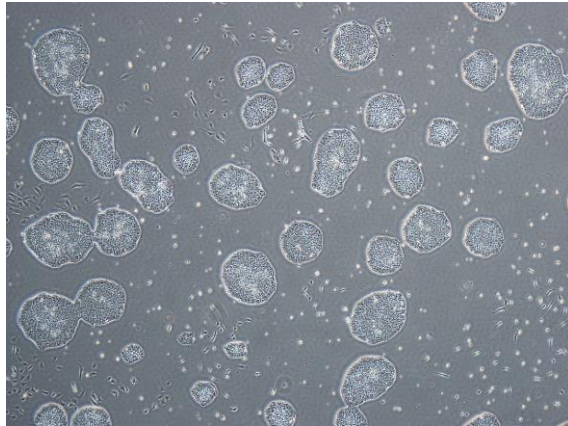


【 CiRA-j-1042 】 Morphology of iPSC colonies

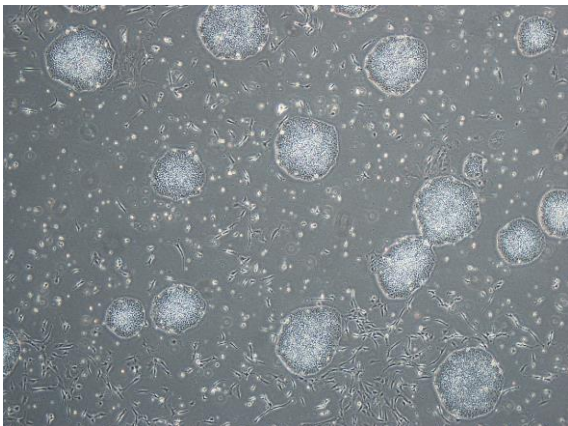
CiRA-j-1042-A: passage-2



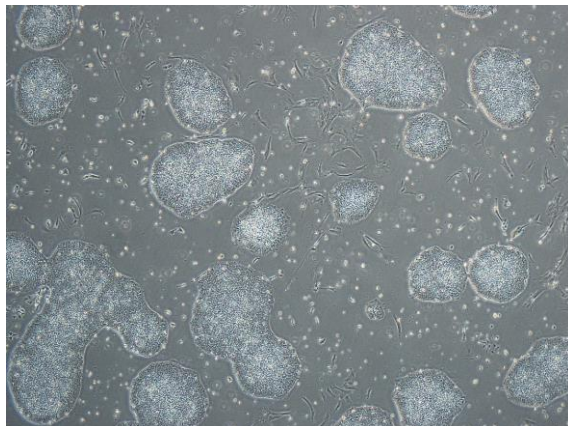
CiRA-j-1042-B: passage-2



CiRA-j-1042-C: passage-2



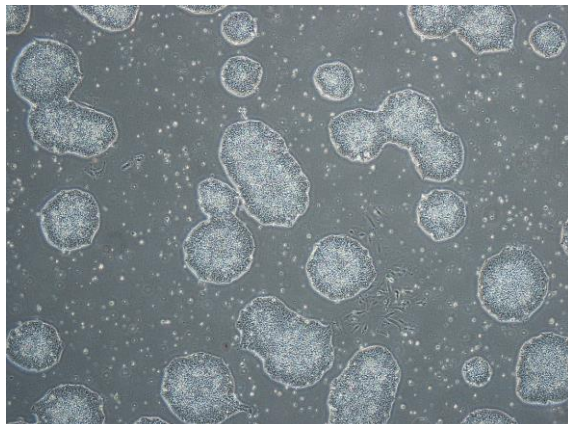
CiRA-j-1042-D: passage-2



CiRA-j-1042-E: passage-2



CiRA-j-1042-F: passage-2



(All images were captured at 4x magnification)